

SCHEMATICS & PARTS LIST

Excel 130 Concrete Form Sprayer



nox-crete™
www.nox-crete.com
402-341-2080

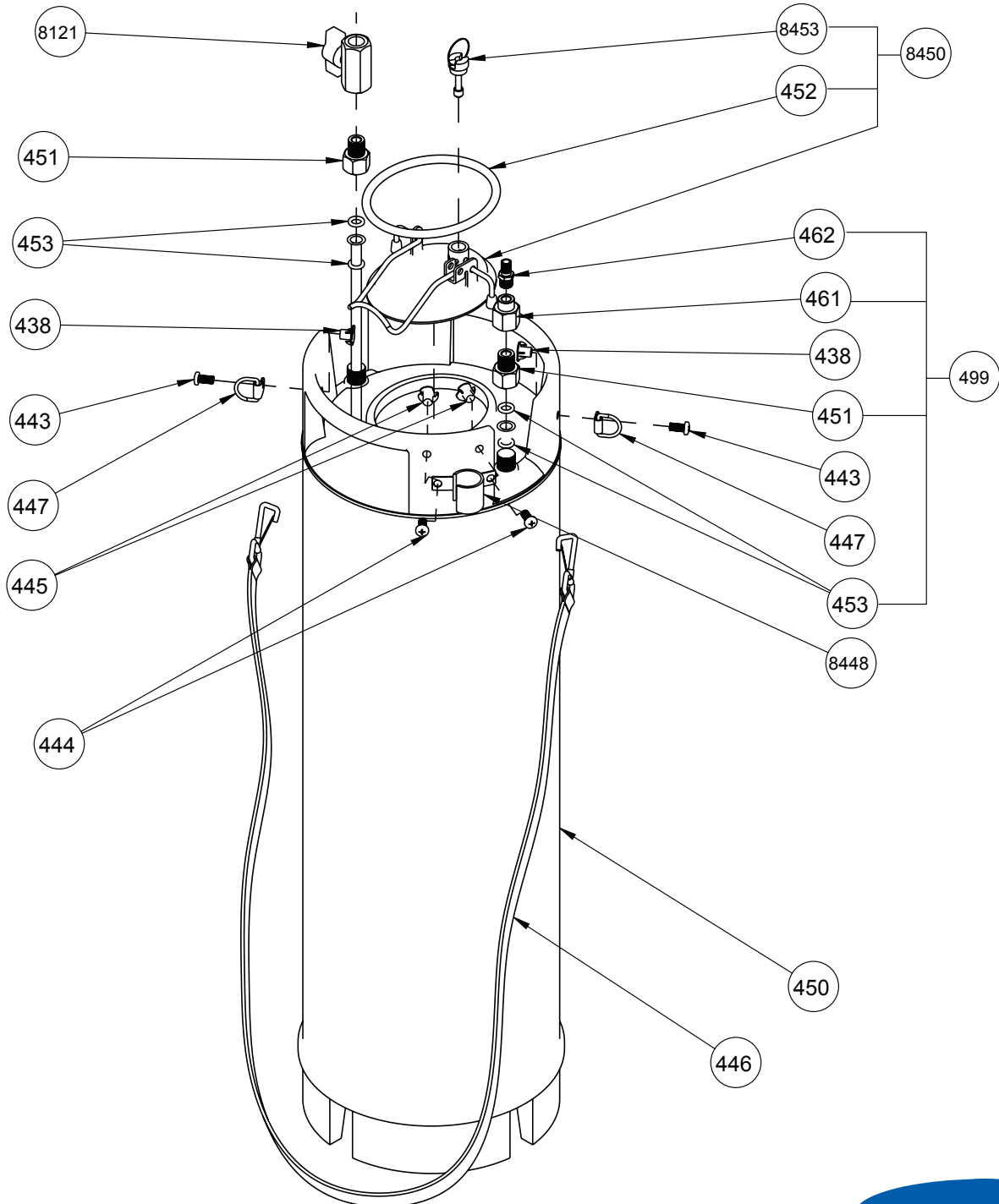
SCHEMATICS & PARTS LIST Excel 130 Concrete Form Sprayer

Part # Product Description

438	LARGE STAINLESS T-NUT FOR STRAP D-RING
443	LARGE STAINLESS BOLT FOR STRAP D-RING
444	SMALL STAINLESS BOLT FOR WAND HOLDER
445	SMALL STAINLESS T-NUT FOR WAND HOLDER
446	SHOULDER STRAP
447	STAINLESS STEEL D -RING
450	5 GALLON KEG TANK
451	TANK CONVERSION FITTING

Part # Product Description

452	VITON LID SEAL
453	INLET/OUTLET SEAL
461	BRASS REDUCER COUPLER
462	1/8" AIR FILL VALVE
499	AIR INLET ASSEMBLY
8121	BALL VALVE
8448	STAINLESS STEEL WAND HOLDER
8450	TANK LID W/ RELIEF VALVE & VITON SEALS
8453	120 PSI RELIEF VALVE W/ VITON "O" RING



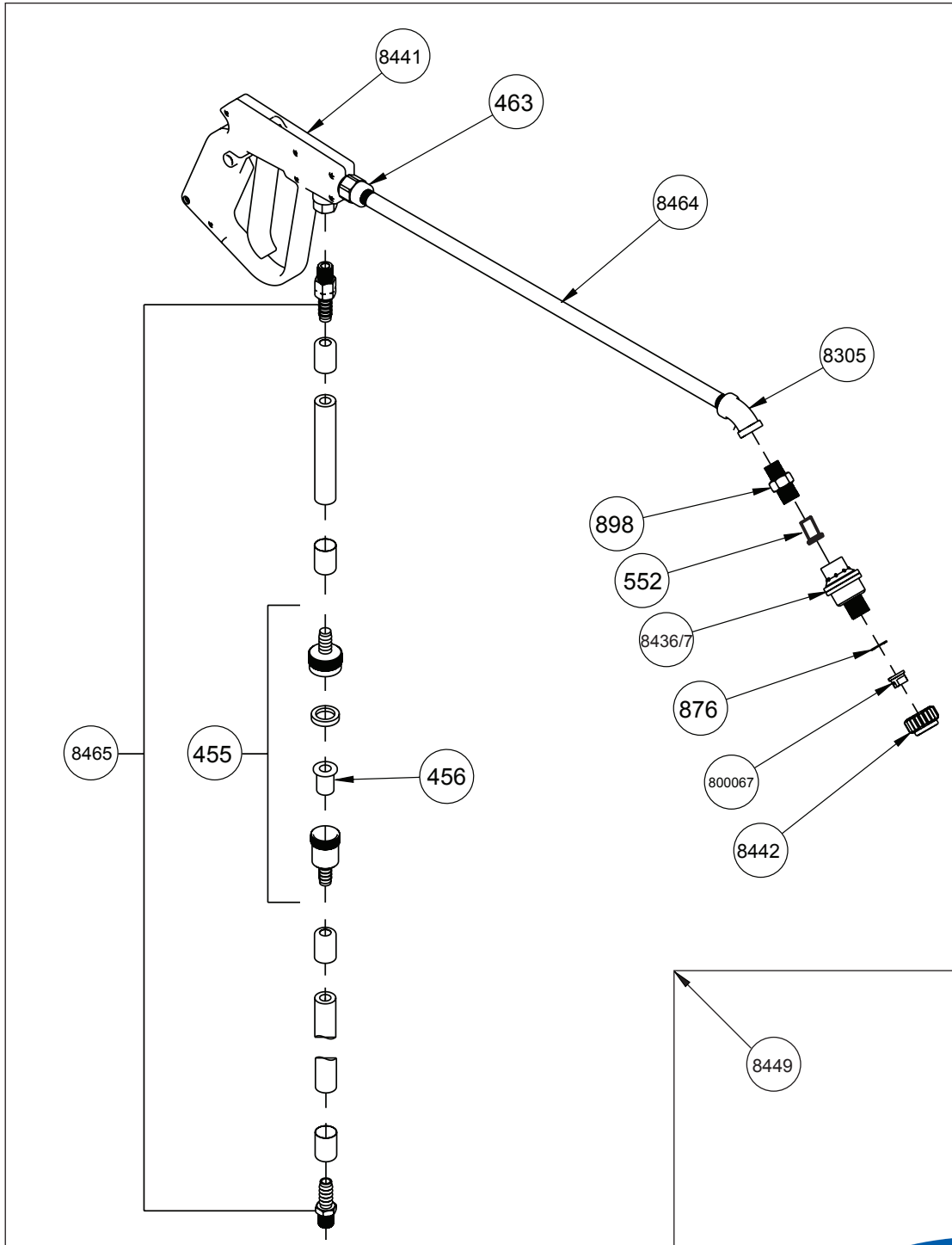
SCHEMATICS & PARTS LIST Excel 130 Concrete Form Sprayer

Part # Product Description

455	IN-LINE FILTER
456	IN-LINE FILTER REPLACEMENT
463	TEE JET ADAPTER BRASS
552	100 MESH TIP FILTER
876	NYLON TIP GASKET
898	MALE NOZZLE BODY ADAPTER
8305	45 DEGREE STEEL ELBOW

Part # Product Description

8436/7	CF VALVE RED & YELLOW (8437) OR GREEN (8436)
8441	PISTOL GRIP SHUT-OFF WITH VITON
8442	PLASTIC RETAINER CAP
8449	COMPLETE HOSE/WAND ASSEMBLY
8464	18" STAINLESS STEEL WAND
8465	EXCEL HOSE ASSEMBLY
800067	800067 SPRAY TIP (<i>TIP SIZE & PART # MAY VARY</i>)



SCHEMATICS & PARTS LIST Excel 130 Concrete Form Sprayer

Use Instructions

- For product and air fill instructions, refer to the Excel 130 Quick Start Guide.
- For specific product information, refer to the Product Data Sheet.
- Spray tips may vary depending on product. Refer to Spray Tip Recommendation Guide.
- Use the 40 PSI valve in temperatures above 50°F (10°C).
- Use the 60 PSI valve in temperatures below 50°F (10°C).

Maintenance Instructions

- Empty contents of sprayer at the end of each day and leave clean with the appropriate cleaning solutions. Leave lid loose on clean sprayer to allow tank to air dry.
- If sponge bronze liquid filter becomes plugged, remove filter and wash out with solvent.

Notice to Users

- This sprayer is designed for Nox-Crete products only.
- This sprayer is designed only for use in exterior applications.
- Improper use or failure to follow instructions can result in explosive failure with potentially serious injuries. For safe use of product, you must read and follow all instructions before use
- Do not leave pressurized sprayer unattended in the hot sun. Heat can cause pressure buildup
- Do not store chemicals in sprayer. Empty and clean sprayer after each use.
- Always wear goggles, rubber gloves, rubber boots, and protective clothing when spraying. If air concentrations exceed the OSHA established TLV for chemical being sprayed, suitable respiratory protection is required.

- Never use any tool to remove lid if there is pressure in the sprayer.
- Do not attempt to modify or repair this sprayer except with original manufacturer's parts.
- Routinely inspect sprayer before each use for signs of wear or damage.
- Replace worn or damaged parts before use.
- When filling tank with compressed air, always observe the pressure gauge to ensure the maximum spraying pressure is not exceeded.
- When pressurizing the sprayer, hold the sprayer off to the side. Do not stand with your head or body directly over the sprayer.
- **DO NOT PRESSURIZE OVER 120 PSI.**

Warranty

NOTICE-READ CAREFULLY

CONDITIONS OF SALE

NOX-CRETE offers this product for sale subject to, and Buyer and all users are deemed to have accepted, the following conditions of sale and limited warranty which may only be varied by written agreement of a duly authorized corporate officer of NOX-CRETE. No other representative of or for NOX-CRETE is authorized to grant any warranty or to waive limitation of liability set forth below.

WARRANTY LIMITATION

NOX-CRETE warrants this product to be free of manufacturing defects. If the product when purchased was defective and was within use period indicated on container or carton, when used, NOX-CRETE will replace the defective product with new product without charge to the purchaser.

NOX-CRETE makes NO OTHER WARRANTY, either express or implied, concerning this product. There is NO WARRANTY OF MERCHANTABILITY. In no case shall NOX-CRETE be liable for special, indirect or consequential damages resulting from the use or handling of the product, and no claim of any kind shall be greater in amount than the purchase price of the product in respect of which damages are claimed.

INHERENT RISKS

NOX-CRETE MAKES NO WARRANTY WITH RESPECT TO THE PERFORMANCE OF THE PRODUCT AFTER IT IS APPLIED BY THE PURCHASER, AND PURCHASER ASSUMES ALL RISKS ASSOCIATED WITH THE USE OR APPLICATION OF THE PRODUCT.

Contact Us

customerservice@nox-crete.com

800-669-2738

402-341-2080

DO NOT USE WITH FLAMMABLE PRODUCTS